

GAIN REAL-TIME INSIGHT INTO YOUR PROCESS

Process Insights manufactures and delivers premium sensors, monitors, detectors, analyzers, instrumentation, and software that are mission-critical to keep your operations, personnel, and the environment safe – every day across the globe.

Get the most reliable, precision analytical technologies available on the market today. We will work to match your needs and budget, and provide the optimal, and most stable process analysis solution for your application.

CENTERS OF EXCELLENCE | PROVIDING PROVEN SOLUTIONS

Process Insights is committed to solving our customers' most complex analytical, process, and measurement challenges everyday.

ANALECT

2121 Aviation Drive, Upland, CA 91786, USA
info@process-insights.com

Process Insights – The Americas

4140 World Houston Parkway Suite 180, Houston, TX 77032, USA +1 713 947 9591

Process Insights – EMEA

ATRICOM, Lyoner Strasse 15, 60528 Frankfurt, Germany +49 69 20436910

Process Insights – APAC

Wujiang Economic and Technology, Development Zone, No. 258 Yi He Road
15200 Suzhou, Jiangsu Province, China +86 400 086 0106

For a complete range of products, applications, systems, and service options, please contact us at:
info@process-insights.com

For a complete list of sales & manufacturing sites, please visit:
<https://www.process-insights.com/about-us/locations/>

PRODUCT DATASHEET

ANALECT® PCM 5000™

FTIR/FT-NIR process analyzers to measure physical, chemical and compositional properties of liquids, solids and gases



REVOLUTIONIZING MEASUREMENT

EVERYWHERE

www.process-insights.com Copyright © 2022 Process Insights, Inc. All Rights Reserved.

analect pcm 5000 DS.rev22.2

Sampling Flexibility


Fast and Accurate

On-line, in-situ, and at-line

- Chemicals
- Petrochemicals
- Polymers
- General manufacturing
- Pharmaceuticals
- Gas analysis

ANALECT® PCM™ 5000
 FTIR/FT-NIR Process Analyzers

- The ANALECT® PCM™ 5000s FTIR/FT-NIR process analyzers measure physical, chemical and compositional properties of liquids, solids and gases.
- On-line, in-situ, and at-line monitoring of batch and continuous processes
 - Displays up to 15 properties at once and measures up to 30 properties per stream
 - Optical multiplexing capabilities provide analysis of up to 16 process streams using fiber optic or extractive stream switching
 - Utilizes process-proven ANALECT Diamond 20 Transept™ optical head:
 - Vibration tolerant optical system allows placement of analyzer in hostile industrial environments
 - Absolute optical alignment of components provides for repeatable spectra, allowing calibrations to remain stable indefinitely
 - SpectraRTS™ software engineered exclusively for on-line monitoring, allowing use by engineers, maintenance personnel, and chemists
 - Communication options including OPC®, Modbus® as well as analog protocols.
 - The PCM monitors versatility allows for a wide range of applications including:
 - Chemicals
 - Petrochemicals
 - Polymers
 - General manufacturing
 - Pharmaceuticals
 - Gas analysis



Full chemometric modeling capability including SpectraQuant™, MATLAB® Unscrambler®, & Pirouette®.

The ANALECT Diamond 20™ analyzer supports on-line systems with process development utilizing the same optical bench as the ANALECT PCM for instrument to instrument calibration data transfer **SpectraStudio™** a Windows® based data collection and analysis program is designed to provide a high degree of flexibility to users operating in a laboratory environment.



PCM Sampling Flexibility



Sampling Flexibility		
Liquids	Mid IR	NearIR
Transmission Probes:	✓	✓
ATR Probes:	✓	–
Cross-line Probes:	✓	✓
Slip-stream Probes:	✓	✓
Gases		
Gas Cell:	✓	–
Solids		
Diffuse Reflectance:	–	✓

Specifications:	
Spectrometer	
Interferometer:	Transept IV™ hermetically sealed module with refractively scanned design
Optical Range:	000–450 cm ⁻¹ Mid-IR; 12000–1200 cm ⁻¹ NIR
Detector Options:	DTGS Pyroelectric; InAs; InGaAs; MCT
Analysis Time	
30–60 sec. for multiple property predictions	
Ambient Environment Conditions	
0–38°C standard ambient temperature -20–50°C with optional heating and A/C system	
Area Classification	
ATEX/CENELEC Zone 1 & 2	
NFPA Class I, Division 1 & 2	
Process Control Interface	
Modbus, OPC and analog protocols	
Fiber optic Ethernet and serial communications options	
Utility Requirements –Analyzer and Cell Enclosure	
Main power 115/230 VAC 50/60Hz single phase 1500 watts	
Instrument – Optical Head and Sample Box	
Dimensions:	220cm H x 97cm W x 46cm D (87 H x 38 W x 18 D)
Weight:	270kg (600lb)

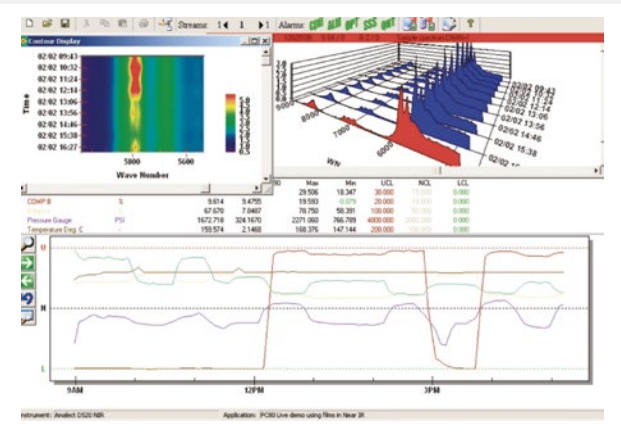
SpectraRTS™ Software Drives Your Process

- Automate many aspects of your process**

 - Control I/O to switch valves and monitor a variety of sample system conditions
 - Collect spectra and apply quantitative analysis routines
 - Transmit product properties, instrument QC data, and alarms via versatile communications protocols
- Implement calibration tools and programming flexibility**

 - Apply a wide variety of quantitative analysis routines including: SpectraQuant, MATLAB and Pirouette
 - Utilizes Visual Basic for Applications (VBA) compatible scripting language to achieve total programming flexibility
 - Operate the system remotely by using pcANYWHERE™ or Timbuktu® software
 - Multi-level password access
- Validate and diagnose your system**

 - Implement on-line validation methods, such as ASTM D6122
 - Automatically monitor and trend the system’s “health” with Remote R_x software for preventative maintenance scheduling
 - Access the on-line help system for quick reference



ANALECT is a registered trademark of Process Insights, Inc. Diamond 20, Diamond MX, EVM, SpectraRTS, SpectraSuite Hydrocarbon SmartSystem, PCM 1000/5000, Optibus and Transept Interferometer are trademarks of Process Insights, Inc. Windows is a registered trademark of Microsoft Corp. All other trademarks are the properties of their respective companies.