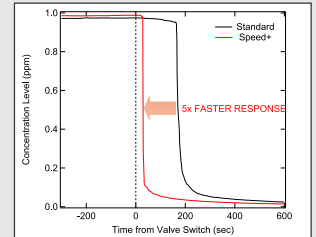


Tiger Optics Analyzer Upgrades

Add more value to your new analyzer!

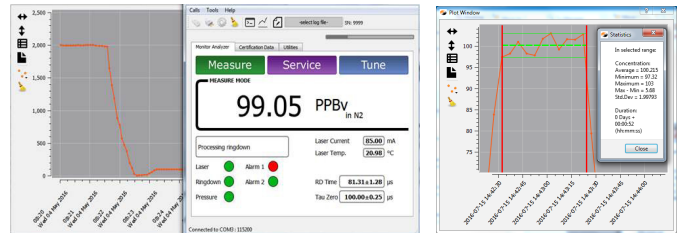
Speed+ Performance Upgrade

- Intelligent dynamic data processing boosts analyzer's speed of response while maintaining low noise performance
- Real-time process control ensures quality, as well as increased capacity to improve efficiency and profitability
- Analyze with Ease™—no manual adjustments required, Speed+ is fully automatic



Serani™ and Serani™ Max Analyzer Interface Software

- Connect to your analyzer remotely from your computer via Ethernet or RS-232 (Windows XP or higher required)
- Data recording, plotting and analysis in real-time with the click of a button
- One-step data collection and other service function shortcuts



Annual Performance Verification

- Low-cost and easy remote verification process, with no need to return the analyzer to the factory
- Annual verification by Tiger Optics ensures that your analyzer continues to meet its original specifications
- Up-to-date Verification Certificate to comply with your QA/QC standards



Installation & Commissioning Package

- On-site analyzer installation and start-up by Tiger Optics trained personnel
- Ensuring correct installation helps prevent future issues with the analyzer or your sampling system
- Gain peace of mind and save money in the long run



Modbus TCP Communication

- Remote communication via standardized Modbus protocol using the analyzer's Ethernet port
- Incorporate your Tiger analyzer easily into existing Modbus instrument control networks
- Standardize communications—eliminate need for RS-232/Telnet commands specific to Tiger analyzers



Find out which upgrade is available for your analyzer!

Analyzer Upgrade	Tiger Optics Analyzer Model					
	LaserTrace LaserTrace+ LaserTrace 2.5 LaserTrace 3	Prismatic Prismatic 2	HALO HALO+ HALO LP/RP/QRP Tiger-i 2000 ALOHA H ₂ O ALOHA+ H ₂ O CO-rekt	HALO 3 HALO KA HALO OK HALO H2	Spark	T-I Max HALO KA Max Spark Max
Speed+				✓	✓	●
Serani†			✓*	✓*	✓	
Serani Max			✓*	✓*		✓
Performance Verification	✓	✓	✓	✓	✓	✓
Installation & Commissioning	✓	✓	✓	✓	✓	✓
Modbus TCP				✓	✓	✓

- ✓ Available
- Standard Feature

*HALO LP/RP/QRP, HALO 3, HALO KA, and HALO OK models with front USB port use **Serani Max**, all models w/o front USB port use **Serani**
 †**Serani** requires firmware version 5.0.0 or higher for full functionality

