

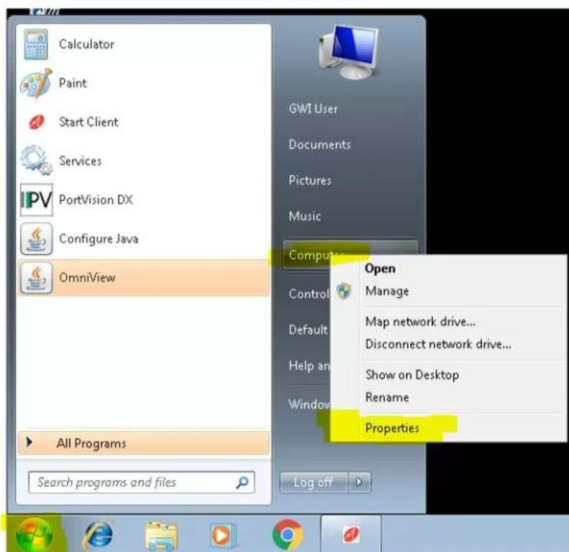
ENABLE VIRTUAL MEMORY ON WINDOWS 7 EMBEDDED

These instruction shows how to enable virtual memory on PCs running Windows 7 Embedded. By default, virtual memory is disabled in Windows 7 Embedded.

PROCEDURE

Logon to the NIR-O analyzer computer as user gwi

Click the Windows Start button, then right-click 'Computer', then click 'Properties'

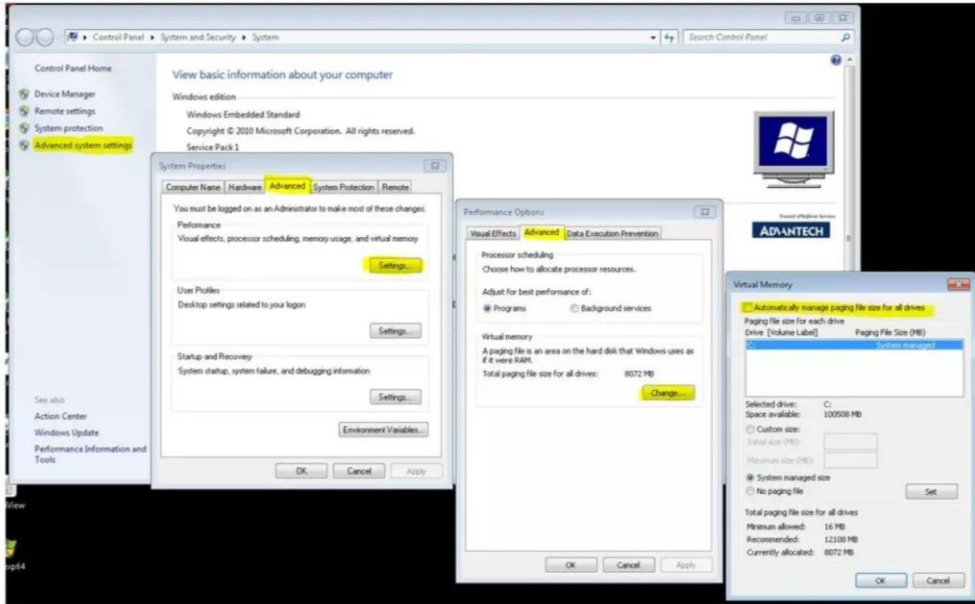


In properties, in the left panel, click 'Advanced system settings', then click on the 'Advanced' tab

In the 'Performance' pane, click 'Settings...'

Again, click the 'Advanced' tab

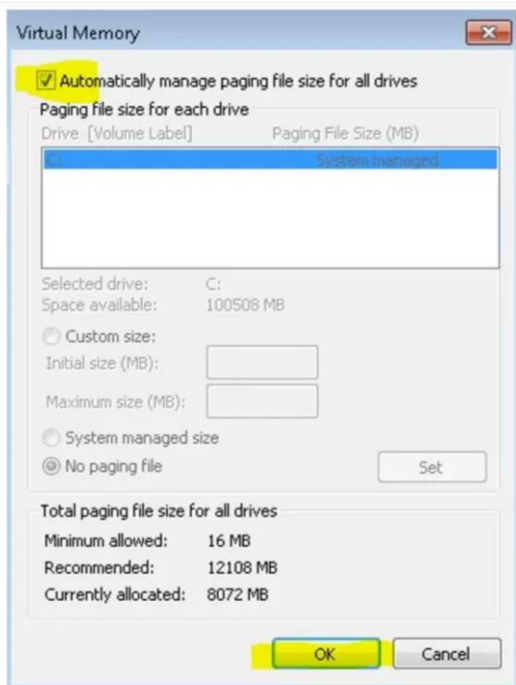
In the 'Virtual memory' pane, click 'Change...'



At the top, of the dialog, check whether or not 'Automatically manage paging file size for all drives' is selected or not.

If it is selected, virtual memory is already enabled. Check with Guided Wave Support to determine if any other changes to the virtual memory settings should be made.

If 'Automatically manage...' is not selected, check the box to enable virtual memory and allow Windows to manage it.



Click 'OK' in each dialog until they are all closed.

Restart the computer to finish activating virtual memory.

Need more help Contact Support Below.

QUE